

\$399,900 - 88, 2300 Oakmoor Drive Sw, Calgary

MLS® #A2206676

\$399,900

3 Bedroom, 2.00 Bathroom, 1,222 sqft
Residential on 0.00 Acres

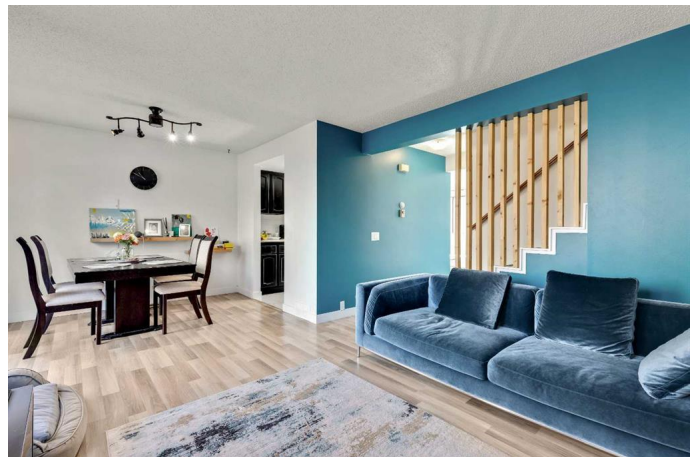
Palliser, Calgary, Alberta

Great neighborhood, quiet location, walk to schools, shopping, Southland Recreation Centre. Large 3 BEDROOM Townhouse with 1 full and 1 half bathroom and partially developed basement. Upgraded main bathroom, newer tiles and laminate flooring. Features main floor flex room, half bathroom, kitchen, dining room, living room and patio door to a good size backyard with patio. Upstairs large master bedroom, full bathroom and 2 bedrooms. Downstairs rec room, laundry room and utility room. Parking stall in front of the unit. VACANT. Drive by today and see this nice complex.

Built in 1976

Essential Information

MLS® #	A2206676
Price	\$399,900
Bedrooms	3
Bathrooms	2.00
Full Baths	1
Half Baths	1
Square Footage	1,222
Acres	0.00
Year Built	1976
Type	Residential
Sub-Type	Row/Townhouse
Style	2 Storey
Status	Active



Community Information

Address	88, 2300 Oakmoor Drive Sw
Subdivision	Palliser
City	Calgary
County	Calgary
Province	Alberta
Postal Code	T2Y 4N7

Amenities

Amenities	None
Parking Spaces	1
Parking	Stall

Interior

Interior Features	No Smoking Home
Appliances	Dishwasher, Range Hood, Refrigerator, Washer/Dryer
Heating	Mid Efficiency
Cooling	None
Has Basement	Yes
Basement	Full, Partially Finished

Exterior

Exterior Features	None
Lot Description	Back Yard, Landscaped
Roof	Asphalt Shingle
Construction	Wood Frame
Foundation	Poured Concrete

Additional Information

Date Listed	April 1st, 2025
Days on Market	8
Zoning	MC-1

Listing Details

Listing Office	CIR Realty
----------------	------------

Data is supplied by Pillar 9â„¢ MLSÂ® System. Pillar 9â„¢ is the owner of the copyright in its MLSÂ® System. Data is deemed reliable but is not guaranteed accurate by Pillar 9â„¢. The trademarks MLSÂ®, Multiple Listing ServiceÂ® and the associated logos are owned by The Canadian Real Estate Association (CREA) and identify the quality of services provided by real estate professionals who are members of CREA. Used under license.