

\$658,250 - 20 Lewiston Drive Ne, Calgary

MLS® #A2206671

\$658,250

4 Bedroom, 3.00 Bathroom, 1,880 sqft
Residential on 0.06 Acres

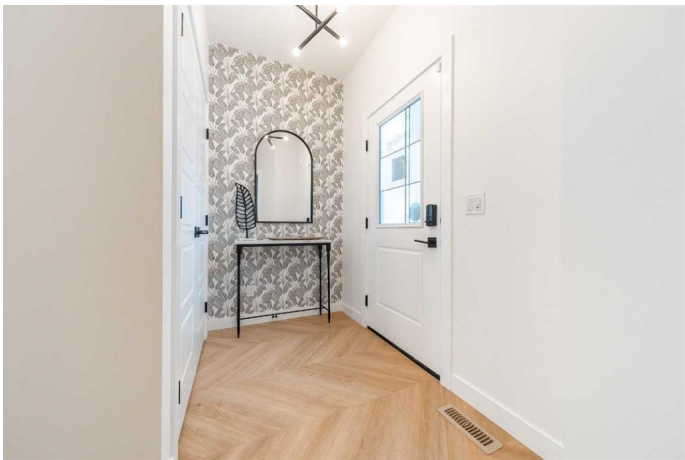
Lewisburg, Calgary, Alberta

Introducing the Jade – a beautifully designed 2-storey home with exceptional features! The chef-inspired kitchen comes complete with sleek stainless-steel appliances, a chimney hood fan, and a spice kitchen with a gas range. The main floor offers a full bath and a bedroom, while the basement boasts a 9' ceiling and a roughed-in 2-bedroom with a separate side entrance. The luxurious ensuite includes dual sinks, a fiberglass shower with tile surround, and a barn-style door. Enjoy quartz countertops throughout, paint-grade railings with iron spindles, a gas line for your BBQ, and back-alley access. The Jade is the perfect blend of function and elegance! Photos are a representative.

Built in 2024

Essential Information

| | |
|----------------|-------------|
| MLS® # | A2206671 |
| Price | \$658,250 |
| Bedrooms | 4 |
| Bathrooms | 3.00 |
| Full Baths | 3 |
| Square Footage | 1,880 |
| Acres | 0.06 |
| Year Built | 2024 |
| Type | Residential |
| Sub-Type | Detached |
| Style | 2 Storey |



| | |
|--------|--------|
| Status | Active |
|--------|--------|

Community Information

| | |
|-------------|----------------------|
| Address | 20 Lewiston Drive Ne |
| Subdivision | Lewisburg |
| City | Calgary |
| County | Calgary |
| Province | Alberta |
| Postal Code | T3P2J6 |

Amenities

| | |
|----------------|-------------|
| Parking Spaces | 4 |
| Parking | Parking Pad |

Interior

| | |
|-------------------|---------------------------------------------------------------------------------------------------------------------------------|
| Interior Features | Double Vanity, Open Floorplan, Pantry, Separate Entrance, Vaulted Ceiling(s), Walk-In Closet(s), Smart Home, Tankless Hot Water |
| Appliances | Dishwasher, Gas Range, Microwave, Refrigerator, Electric Range, Range Hood, Tankless Water Heater |
| Heating | Forced Air, Natural Gas |
| Cooling | None |
| Has Basement | Yes |
| Basement | Full, Unfinished |

Exterior

| | |
|-------------------|---------------------------------|
| Exterior Features | None |
| Lot Description | Back Lane |
| Roof | Asphalt Shingle |
| Construction | Stone, Vinyl Siding, Wood Frame |
| Foundation | Poured Concrete |

Additional Information

| | |
|----------------|------------------|
| Date Listed | March 31st, 2025 |
| Days on Market | 15 |
| Zoning | TBD |

Listing Details

| | |
|----------------|--------------------|
| Listing Office | Bode Platform Inc. |
|----------------|--------------------|

Data is supplied by Pillar 9â„¢ MLSÂ® System. Pillar 9â„¢ is the owner of the copyright in its MLSÂ® System. Data is deemed reliable but is not guaranteed accurate by Pillar 9â„¢. The trademarks MLSÂ®, Multiple Listing ServiceÂ® and

the associated logos are owned by The Canadian Real Estate Association (CREA) and identify the quality of services provided by real estate professionals who are members of CREA. Used under license.