

\$565,000 - 132 Aspen Creek Crescent, Strathmore

MLS® #A2205282

\$565,000

5 Bedroom, 3.00 Bathroom, 1,273 sqft
Residential on 0.13 Acres

Aspen Creek, Strathmore, Alberta

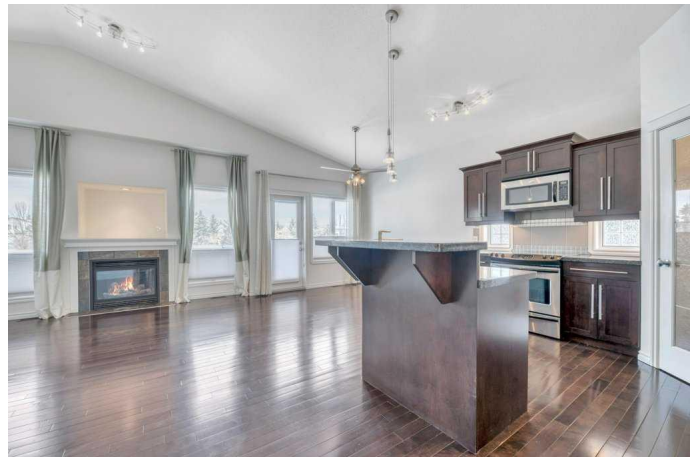
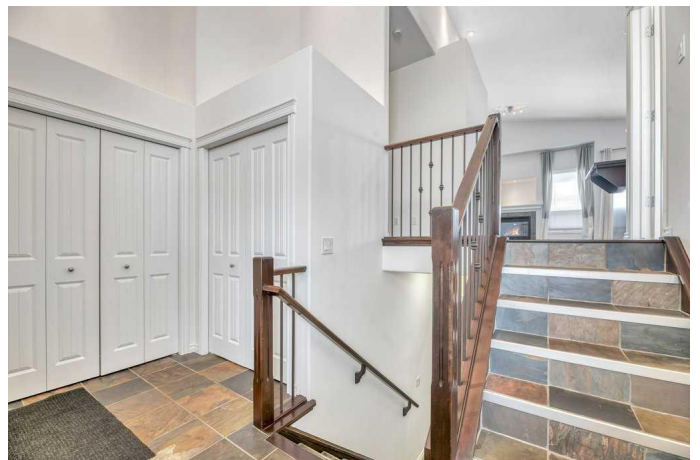
OPEN HOUSE SUNDAY, APRIL 6TH 2-4PM!

Pride of ownership is evident throughout this air-conditioned 5-bedroom, 3-bath home located in the sought-after community of Aspen Creek in Strathmore. With over 2,300 sqft of developed living space and backing onto the tranquil canal and greenspace, this home offers a peaceful setting paired with everyday functionality.

The main floor features an open-concept layout with vaulted ceilings, hardwood floors, and large windows that fill the space with natural light. The kitchen is equipped with upgraded granite countertops, wood shaker cabinetry, a corner pantry, and plenty of cupboard and counter space. The adjacent dining area leads to a spacious deck with serene views—perfect for morning coffee or evening BBQs. The cozy living room includes a gas fireplace, adding warmth to the heart of the home.

The primary bedroom offers a 4-piece ensuite and walk-in closet, while two additional bedrooms on the main floor provide space for family or guests. The fully finished basement includes two more bedrooms, both with egress windows, a large rec area, and a full 4-piece bath. The stylish polished acid-stained concrete flooring throughout the lower level adds a unique touch and durability.

Recent updates include a newer roof, newer



central A/C, and fresh paint throughout. This home is perfectly located in a quiet, family-friendly neighborhoodâ€”close to schools, parks, and all of Strathmoreâ€™s amenities.

A great opportunity to own a quality-built home in a beautiful setting with space for the whole family.

Built in 2007

Essential Information

MLS® #	A2205282
Price	\$565,000
Bedrooms	5
Bathrooms	3.00
Full Baths	3
Square Footage	1,273
Acres	0.13
Year Built	2007
Type	Residential
Sub-Type	Detached
Style	Bi-Level
Status	Active

Community Information

Address	132 Aspen Creek Crescent
Subdivision	Aspen Creek
City	Strathmore
County	Wheatland County
Province	Alberta
Postal Code	T1P 0A6

Amenities

Parking Spaces	4
Parking	Concrete Driveway, Double Garage Attached, Insulated
# of Garages	2

Interior

Interior Features	Granite Counters, High Ceilings, Jetted Tub, Kitchen Island, No Animal Home, No Smoking Home, Open Floorplan, Pantry, Soaking Tub, Vaulted Ceiling(s), Vinyl Windows, Walk-In Closet(s)
Appliances	Central Air Conditioner, Dishwasher, Dryer, Electric Oven, Garage Control(s), Microwave Hood Fan, Refrigerator, Washer
Heating	Forced Air
Cooling	Central Air
Fireplace	Yes
# of Fireplaces	1
Fireplaces	Gas
Has Basement	Yes
Basement	Finished, Full

Exterior

Exterior Features	None
Lot Description	Back Yard, Backs on to Park/Green Space, Front Yard, Lawn, No Neighbours Behind, Views, Greenbelt
Roof	Asphalt Shingle
Construction	Wood Frame
Foundation	Poured Concrete

Additional Information

Date Listed	April 3rd, 2025
Days on Market	1
Zoning	R1

Listing Details

Listing Office Century 21 Bamber Realty LTD.

Data is supplied by Pillar 9â„¢ MLSÂ® System. Pillar 9â„¢ is the owner of the copyright in its MLSÂ® System. Data is deemed reliable but is not guaranteed accurate by Pillar 9â„¢. The trademarks MLSÂ®, Multiple Listing ServiceÂ® and the associated logos are owned by The Canadian Real Estate Association (CREA) and identify the quality of services provided by real estate professionals who are members of CREA. Used under license.