

# \$595,000 - 19 Strathearn Crescent Sw, Calgary

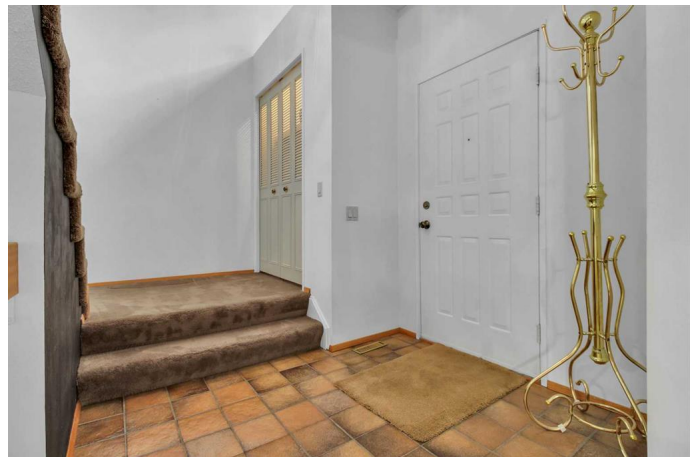
MLS® #A2203035

**\$595,000**

4 Bedroom, 3.00 Bathroom, 1,661 sqft  
Residential on 0.08 Acres

Strathcona Park, Calgary, Alberta

Welcome to your dream home in Strathcona Park! Nestled in the heart of Calgary's most desirable community, this stunning two-story home offers the perfect blend of comfort, elegance, and convenience. This haven for families is move-in ready, immaculately maintained, and thoughtfully designed to accommodate both everyday living and cherished moments. Step inside and be greeted by a spacious main floor that welcomes you with a bright and inviting living area. Cozy up in the spacious family room by the fireplace, perfect for chilly evenings. The formal dining area sets the stage for memorable family gatherings, while the stylish and functional kitchen is ready to inspire your culinary adventures. A convenient powder room and main floor laundry complete this level. Enjoy the south-facing newer Dura deck with its remote awning for those hot summer days. Upstairs, you'll find three generously sized bedrooms, each bathed in natural light and providing ample space for your growing family. The primary bedroom boasts a luxurious four-piece bath. Storage is abundant throughout the home, ensuring everything has its designated place. The fully developed basement further expands your living space with an additional bedroom and a large second family room—ideal for hosting guests, setting up a playroom, or creating a home theatre. Outside, the detached garage and ample parking add to the home's convenience. The charming front porch is the perfect spot to



enjoy your morning coffee in the sunshine. Location is everything, and this home delivers! A short 10-minute walk takes you to the Sirocco LRT Station, making downtown commuting a breeze. Within a 12-minute drive, you'll find yourself in the heart of the city yet still surrounded by the tranquility of Strathcona Park. The community boasts exceptional schools, including Olympic Heights and John Costello, along with scenic ravines, winding walking trails, off-leash dog parks, playing fields, and the convenient shopping and dining options of Strathcona Square. This house isn't just a building; it's a place where cherished memories are created. Whether it's cozy winter evenings spent by the fireplace, sunny summer days spent exploring nearby parks, or weekend mountain adventures via the nearby ring road, this home is the perfect backdrop for your family's next chapter. Don't miss this incredible opportunity to own in Strathcona Park at an unbeatable value. Schedule your private viewing today and take the first step toward making this beautiful house your forever home!

Built in 1981

### Essential Information

MLS® #	A2203035
Price	\$595,000
Bedrooms	4
Bathrooms	3.00
Full Baths	2
Half Baths	1
Square Footage	1,661
Acres	0.08
Year Built	1981
Type	Residential
Sub-Type	Detached
Style	2 Storey

Status Active

### Community Information

Address 19 Strathearn Crescent Sw  
Subdivision Strathcona Park  
City Calgary  
County Calgary  
Province Alberta  
Postal Code T3H 1R3

### Amenities

Parking Spaces 3  
Parking Additional Parking, Alley Access, Double Garage Detached, Front Drive, On Street, Garage Faces Rear  
# of Garages 2

### Interior

Interior Features Bar, Central Vacuum, Laminate Counters, No Animal Home, No Smoking Home, Separate Entrance, Storage  
Appliances Dishwasher, Dryer, Electric Range, Garage Control(s), Range Hood, Refrigerator, Washer, Window Coverings  
Heating Forced Air, Natural Gas  
Cooling None  
Fireplace Yes  
# of Fireplaces 1  
Fireplaces Gas, Brick Facing, Family Room, Mantle  
Has Basement Yes  
Basement Finished, Full

### Exterior

Exterior Features Awning(s), Private Entrance  
Lot Description Back Lane, Back Yard, Landscaped  
Roof Asphalt Shingle  
Construction Vinyl Siding, Wood Frame  
Foundation Poured Concrete

### Additional Information

Date Listed March 31st, 2025  
Days on Market 3  
Zoning R-CG

## Listing Details

Listing Office            RE/MAX Real Estate (Mountain View)

Data is supplied by Pillar 9â,,ç MLSÂ® System. Pillar 9â,,ç is the owner of the copyright in its MLSÂ® System. Data is deemed reliable but is not guaranteed accurate by Pillar 9â,,ç. The trademarks MLSÂ®, Multiple Listing ServiceÂ® and the associated logos are owned by The Canadian Real Estate Association (CREA) and identify the quality of services provided by real estate professionals who are members of CREA. Used under license.