

# \$299,700 - 105, 880 Centre Avenue Ne, Calgary

MLS® #A2186035

## \$299,700

1 Bedroom, 1.00 Bathroom, 621 sqft  
Residential on 0.00 Acres

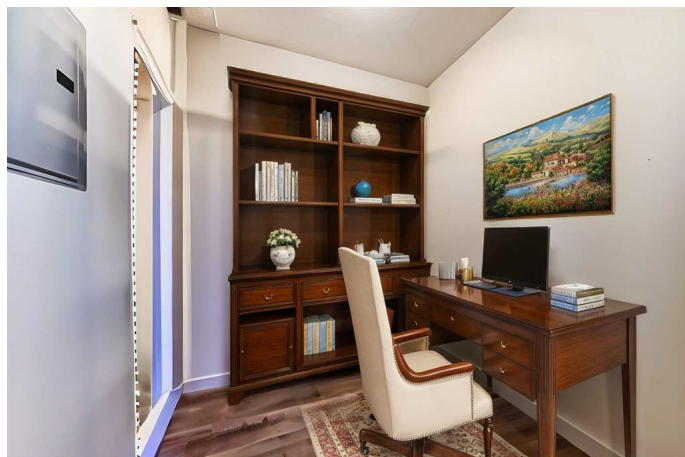
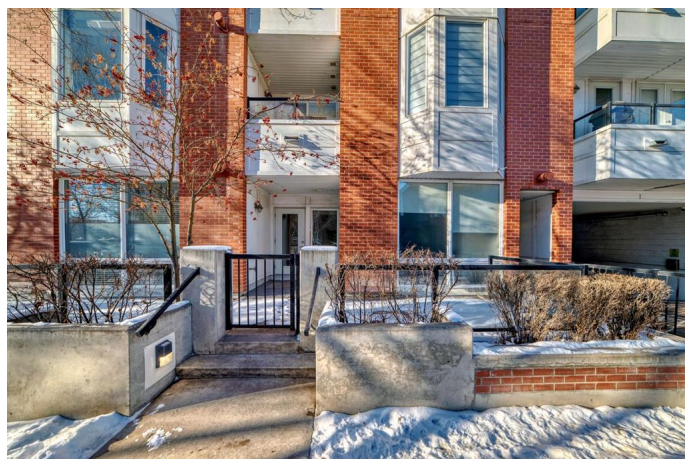
Bridgeland/Riverside, Calgary, Alberta

Experience the extraordinary in Bridgeland! This 1 bedroom and den has been freshly painted with new floors! Embrace a walkable lifestyle with paths, parks, dog parks, shopping, restaurants as well as public transit (C-train) blocks away. Life is all about the little things that make every moment extraordinary. Imagine spending more time on what truly matters—sledding in the winter, strolling through parks in the summer, and focusing on living rather than chores. This home boasts a private patio perfect for relaxing, direct access/exit for added convenience, a functional layout that optimizes space and furniture placement, ensuite laundry, and sliding doors to your bedroom, a warm inviting fireplace in the living room, a dedicated office space tailored for modern needs, a underground parking stall and storage locker! Call today for your private showing!

Built in 2005

## Essential Information

MLS® #	A2186035
Price	\$299,700
Bedrooms	1
Bathrooms	1.00
Full Baths	1
Square Footage	621
Acres	0.00



Year Built	2005
Type	Residential
Sub-Type	Apartment
Style	Low-Rise(1-4)
Status	Active

### **Community Information**

Address	105, 880 Centre Avenue Ne
Subdivision	Bridgeland/Riverside
City	Calgary
County	Calgary
Province	Alberta
Postal Code	T2E 9C3

### **Amenities**

Amenities	None
Parking Spaces	1
Parking	Underground

### **Interior**

Interior Features	Breakfast Bar, No Smoking Home, Open Floorplan
Appliances	Dishwasher, Dryer, Electric Stove, Microwave Hood Fan, Refrigerator, Washer, Window Coverings
Heating	Baseboard
Cooling	None
Fireplace	Yes
# of Fireplaces	1
Fireplaces	Gas
# of Stories	4

### **Exterior**

Exterior Features	Playground, Private Entrance, Storage
Construction	Brick, Wood Frame

### **Additional Information**

Date Listed	January 7th, 2025
Days on Market	100
Zoning	DC

### **Listing Details**

Listing Office

Royal LePage Benchmark

Data is supplied by Pillar 9â„¸ MLSÂ® System. Pillar 9â„¸ is the owner of the copyright in its MLSÂ® System. Data is deemed reliable but is not guaranteed accurate by Pillar 9â„¸. The trademarks MLSÂ®, Multiple Listing ServiceÂ® and the associated logos are owned by The Canadian Real Estate Association (CREA) and identify the quality of services provided by real estate professionals who are members of CREA. Used under license.